

Madison, Wisconsin

CITY OF MADISON

CITY ENGINEERING DIVISION

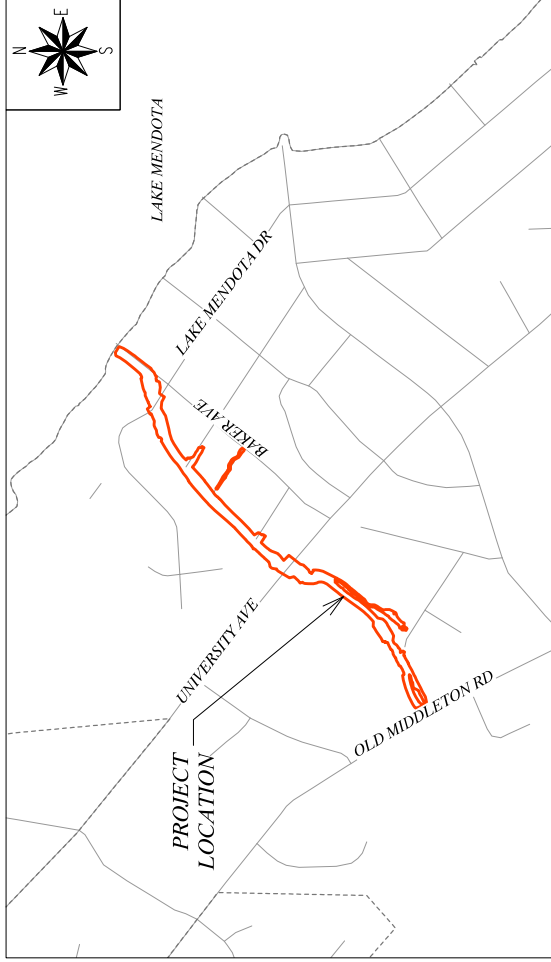
DEPARTMENT OF PUBLIC WORKS

PLAN OF PROPOSED IMPROVEMENT

MENDOTA GRASSMAN GREENWAY

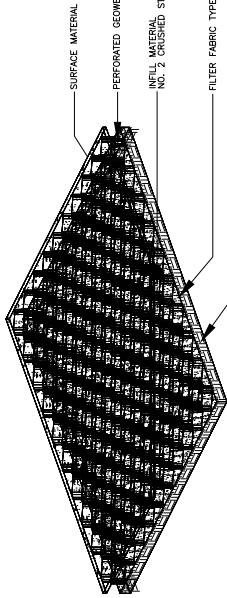
CITY PROJECT NO. 12882
CONTRACT NO. 9439

INDEX OF SHEETS	DETAILS
SHEET NO. G1 - G3	TYPICAL SECTIONS
SHEET NO. TS1 - TS4	TREE REMOVAL PLANS
SHEET NO. TR1 - TR5	DEMOLITION PLANS
SHEET NO. D1 - D2	CAMELOT DRIVE CULVERT PLANS
SHEET NO. B-13-0900 1-4	UNIVERSITY AVE CULVERT PLANS
SHEET NO. C-13-2088 1-3	GREENWAY PLAN AND PROFILES
SHEET NO. PP16 - PP20	MAINTENANCE PATH AND SAS ACCESS PLAN AND PROFILES
SHEET NO. PP21 - PP27	CAMELOT DR. RESTORATION PLAN AND PROFILES
SHEET NO. PP28 - PP30	UNIVERSITY AVE RESTORATION PLAN AND PROFILES
SHEET NO. PP31 - PP33	UTILITY SCHEDULES
SHEET NO. SCH1 - SCH2	EROSION CONTROL AND RESTORATION PLANS
SHEET NO. EC1 - EC4	GREENWAY CROSS SECTIONS
SHEET NO. CS1 - CS19	SAS ACCESS ROAD CROSS SECTIONS
SHEET NO. CS20 - CS23	ROADWAY CROSS SECTIONS
SHEET NO. CS24 - CS25	TRAFFIC CONTROL PLANS
SHEET NO. TC1 - TC36	RESTORATION PLANS
SHEET NO. R-1 - R-9	

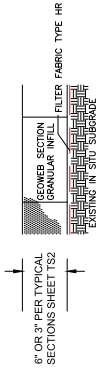


PUBLIC IMPROVEMENT PROJECT APPROVED APPROVED DATE: MARCH 21, 2023 BY THE COMMON COUNCIL OF MADISON, WISCONSIN	PUBLIC IMPROVEMENT DESIGN APPROVED BY: May 16, 2023	GREENWAY, UTILITY, AND ROADWAY DESIGN BY: 	CULVERT STRUCTURAL DESIGN BY:
---	--	---	-----------------------------------

- NOTES:
- PREPARE THE SUBGRADE AS SHOWN ON THE CONSTRUCTION DRAWINGS.
 - VERIFY THAT THE SUBGRADE STRENGTH, IF REQUIRED, IS ADEQUATE TO SUPPORT THE GEOWEB MATS.
 - WHERE REQUIRED, PROVIDE GEOTEXTILE SEPARATION WHERE REQUIRED, PLACE AND COMPACT SUBGRADE MATERIAL TO THE SPECIFIED IN PLACE POSITION AND EXPAND THE GEOWEB SECTIONS INTO POSITION AND PLACE THE SPECIFIED INFILL MATERIAL TO 2 INCHES ABOVE CELL WALLS FOR 6" HIGH GEOWEB CELLS ONLY. PROVIDE ADDITIONAL SURFACE MATERIAL, AS SPECIFIED.
 - PROVIDE ADDITIONAL SURFACE MATERIAL, AS SPECIFIED.



ISOMETRIC - TYPICAL LOAD SUPPORT STRUCTURE



LOAD SUPPORT OVER SOFT SOIL AND AGGREGATE SURFACE STABILIZATION

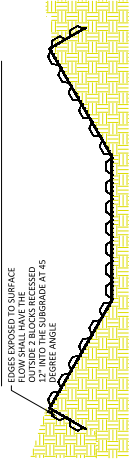
THIS DRAWING IS COPYRIGHTED AND NOT BE LOANED, REPRODUCED, COPIED, OR REPRODUCED IN ANY MANNER WITHOUT THE WRITTEN PERMISSION OF PRESTO GEOWEB. ANY USE OF THIS DRAWING FOR A PROJECT OTHER THAN THAT MANUFACTURED BY PRESTO GEOWEB IS STRICTLY PROHIBITED.

PRESTO PRODUCTS CO.
 2000 W. WISCONSIN AVE. SUITE 100
 MILWAUKEE, WI 53227
 WWW.PRESTO.COM

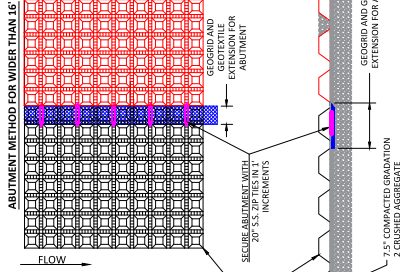
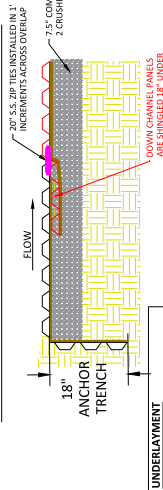
GENUINE GEOWEB®
 LOAD SUPPORT DETAILS

PRESTO GEOWEB® AND AN® ARE REGISTERED TRADEMARKS OF PRESTO PRODUCTS CO.
 DATE: NOVEMBER 2019 FILE NAME: 040124010
 SCALE: NTS SHEET: 1 OF 2000 PRESTO GEOWEB SYSTEMS

METHOD FOR TREATING EDGES EXPOSED TO SURFACE SHEET FLOW



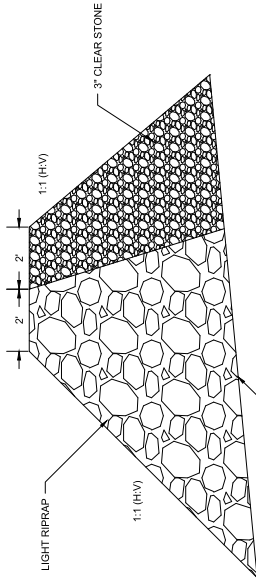
LEADING EDGE ANCHOR TRENCH AND OVERLAP SEAMS PERPENDICULAR TO FLOW



CHANNEL - LAYOUT PARALLEL TO FLOW

CONSTRUCTION NOTES:

- GRADE CHANNEL SO THAT WATER WILL FLOW DOWN CENTER OF THE CHANNEL AND BE CONTAINED TO THE CHANNEL. ALL SUBGRADE SURFACES PREPARED FOR PLACEMENT OF MATS SHALL BE SMOOTH AND FREE OF ALL ROCKS, STICKS, TWIGS, OTHER PROTRUSIONS OR OBSTACLES OF ANY KIND.
- INSTALL MATS DOWN CENTER OF CHANNEL AND OVERLAP SEAMS PARALLEL TO FLOW.
- FOR CHANNELS THAT ARE WIDER THAN 16", INSTALL ROLLS THAT INCLUDE GEOTEXTILE UNDERLAYER EXTENSIONS. THESE SEAMS ARE PARALLEL TO FLOW. THE SEAM MATS SHALL BE INSTALLED OVER THE EXTENSIONS. INSTALL GEOTEXTILE UNDERLAYER EXTENSIONS PARALLEL TO FLOW AND OVERLAP SEAMS PARALLEL TO FLOW. INSTALL UNDERLAYER MATS PARALLEL TO FLOW. INSTALL UNDERLAYER MATS PARALLEL TO FLOW. INSTALL UNDERLAYER MATS PARALLEL TO FLOW.
- FOR ANCHORS OR ZIP TIES TO BE INSTALLED PERPENDICULAR TO FLOW, ZIP TIES SHALL ENDOWAS 3 CORNERS OF GEOTEXTILE FROM EACH MAT.
- FOR ANCHORS OR ZIP TIES TO BE INSTALLED PARALLEL TO FLOW, ZIP TIES SHALL ENDOWAS 3 CORNERS OF GEOTEXTILE FROM EACH MAT.
- FOR ANCHORS OR ZIP TIES TO BE INSTALLED PARALLEL TO FLOW, ZIP TIES SHALL ENDOWAS 3 CORNERS OF GEOTEXTILE FROM EACH MAT.
- FOR ANCHORS OR ZIP TIES TO BE INSTALLED PARALLEL TO FLOW, ZIP TIES SHALL ENDOWAS 3 CORNERS OF GEOTEXTILE FROM EACH MAT.
- FOR ANCHORS OR ZIP TIES TO BE INSTALLED PARALLEL TO FLOW, ZIP TIES SHALL ENDOWAS 3 CORNERS OF GEOTEXTILE FROM EACH MAT.
- FOR ANCHORS OR ZIP TIES TO BE INSTALLED PARALLEL TO FLOW, ZIP TIES SHALL ENDOWAS 3 CORNERS OF GEOTEXTILE FROM EACH MAT.
- FOR ANCHORS OR ZIP TIES TO BE INSTALLED PARALLEL TO FLOW, ZIP TIES SHALL ENDOWAS 3 CORNERS OF GEOTEXTILE FROM EACH MAT.



REINFORCED STONE DITCH CHECK
 BID ITEM 90031

PROJECT DATE	NO.	DATE	BY
2023	1		

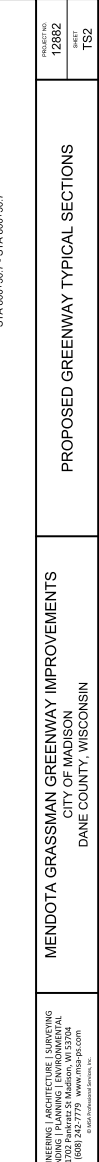
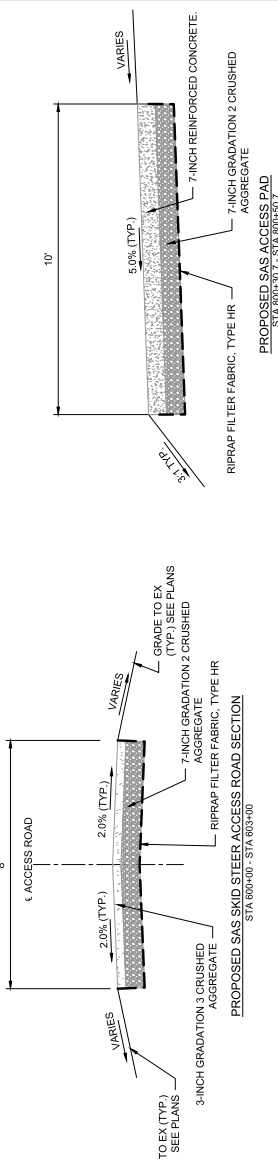
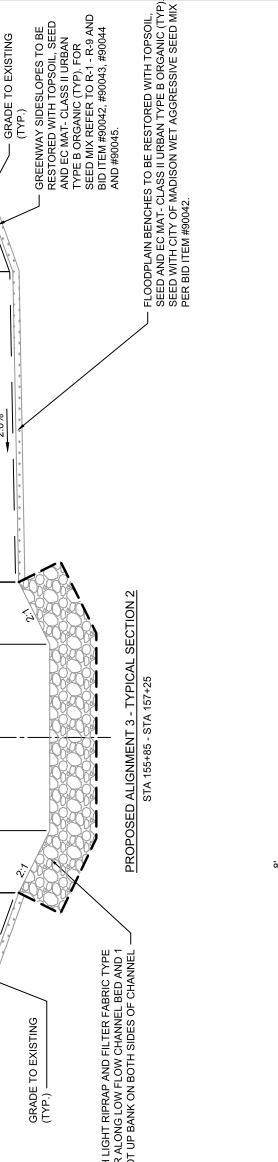
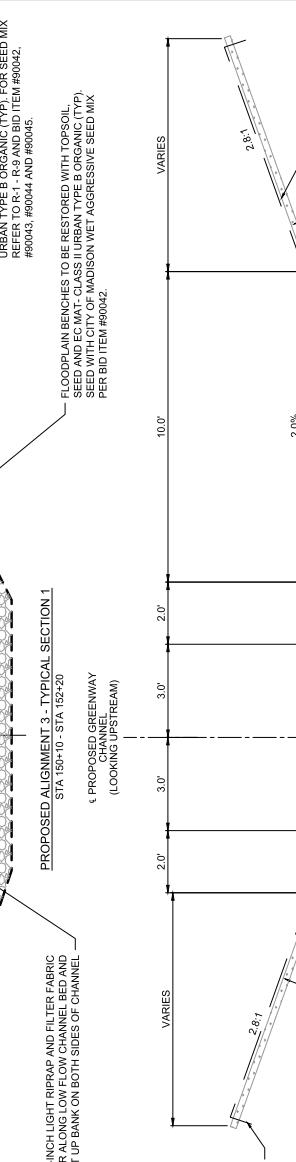
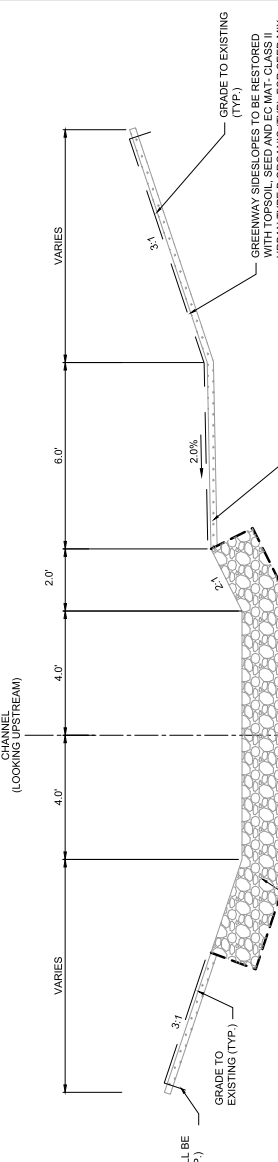
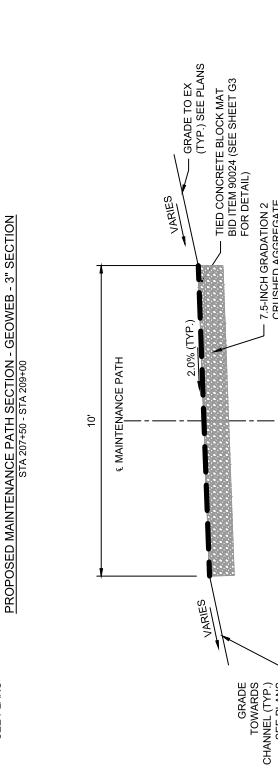
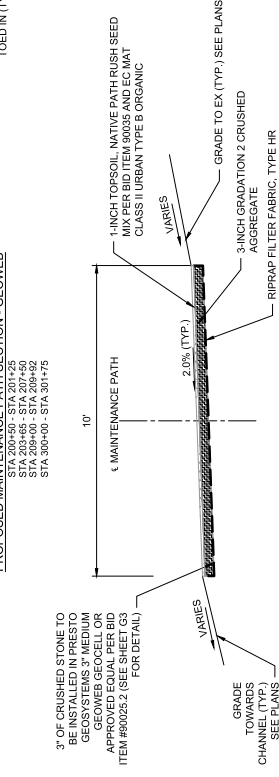
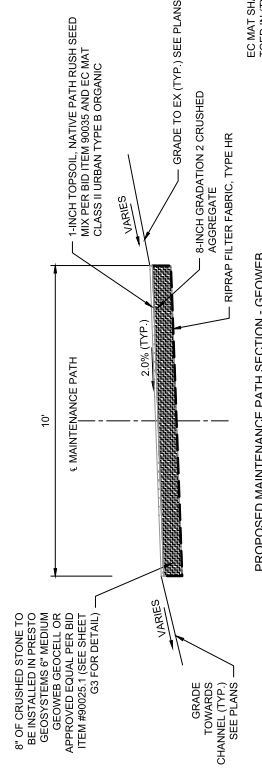
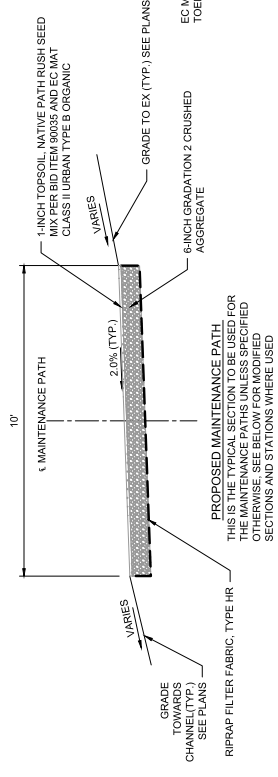
ENGINEERING ARCHITECTURE | SURVEYING
 PLANNING | ENVIRONMENTAL
 CONSULTING | LANDSCAPE ARCHITECTURE
 (608) 842-7779 www.msa-pe.com



MENDOTA GRASSMAN GREENWAY IMPROVEMENTS
 CITY OF MADISON
 DANE COUNTY, WISCONSIN

DETAILS - EROSION CONTROL

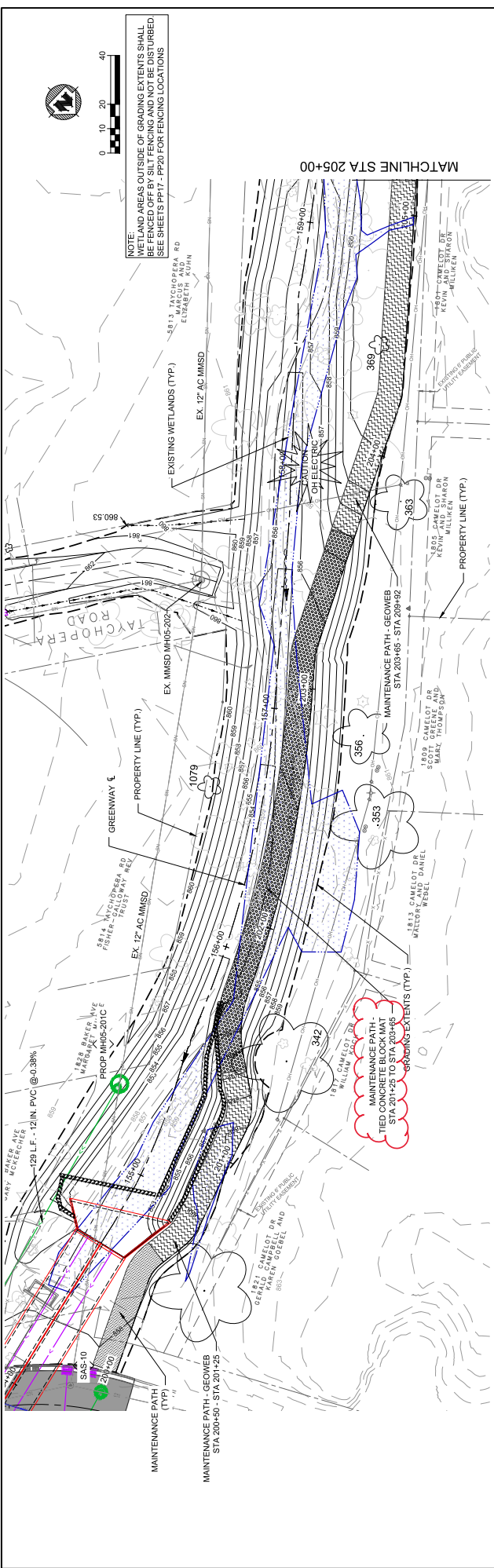
NOTES: 1. VACUATE AN ADDITIONAL 6 INCHES (PAID UNDER BID ITEM 20101) AND PLACE GRADATION 1 CRUSHED AGGREGATE BASE COURSE (PAID UNDER BID ITEM 40101) IN AREAS WHERE SOILS ARE POOR ALONG THE MAINTENANCE PATH AND AS DIRECTED BY THE ENGINEER



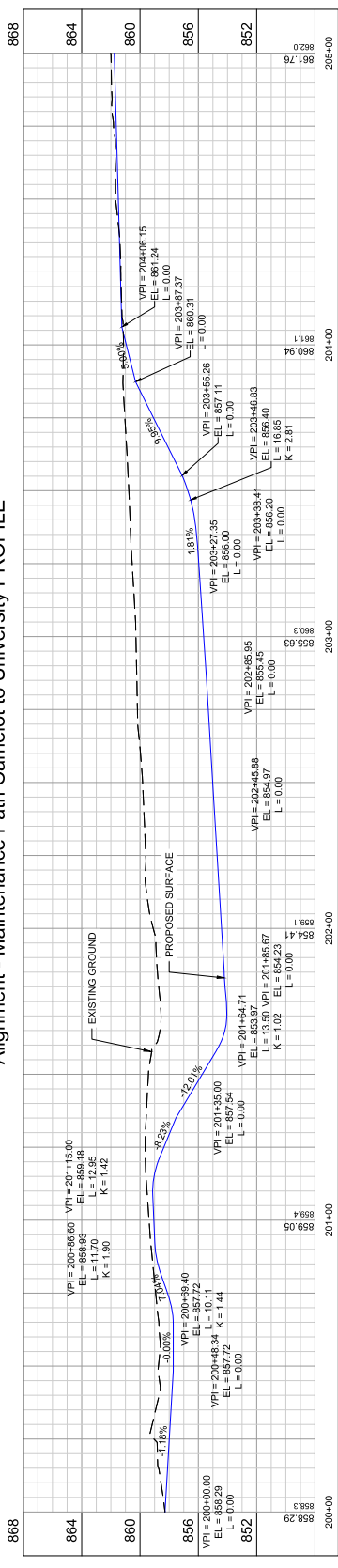
PROJECT DATE	NO.	DATE	BY
2023	1		
	2		
	3		
	4		
	5		
	6		
	7		
	8		
	9		
	10		

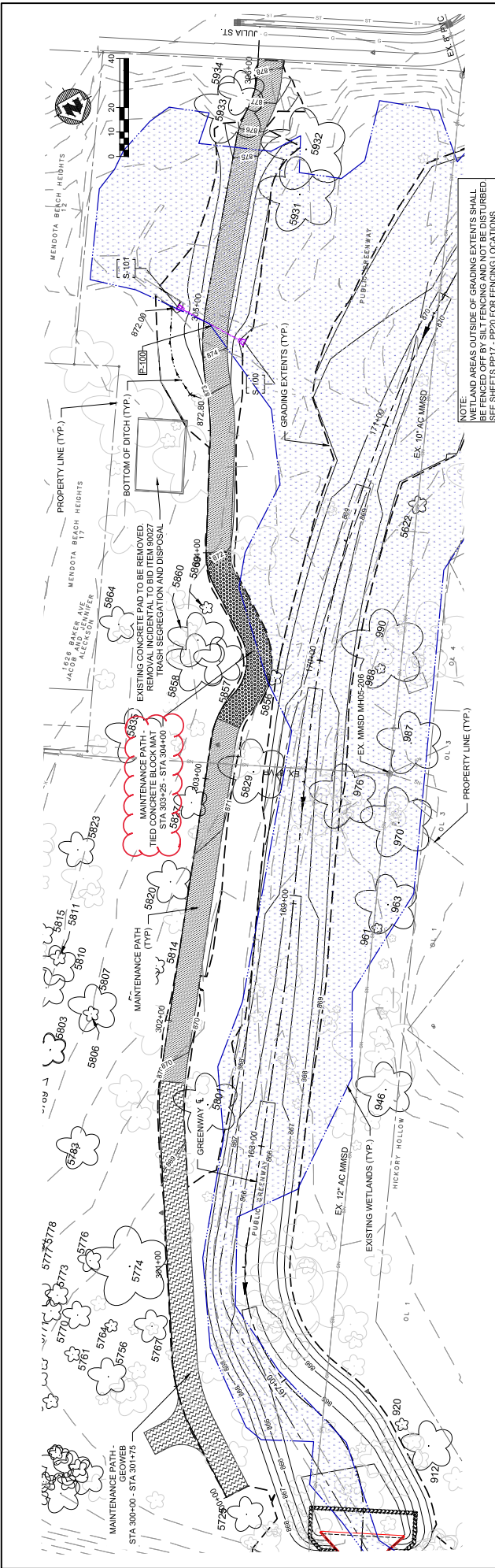
ENGINEERING ARCHITECTURE | SURVEYING
 PLANNING | ENVIRONMENTAL
 CONSULTING
 (608) 242-7777 www.msa-ps.com
 600 East Wisconsin Avenue, Inc.

PROJECT NO. 12862
 SHEET 152
 MENDOTA GRASSMAN GREENWAY IMPROVEMENTS
 CITY OF MADISON
 DANE COUNTY, WISCONSIN
 PROPOSED GREENWAY TYPICAL SECTIONS



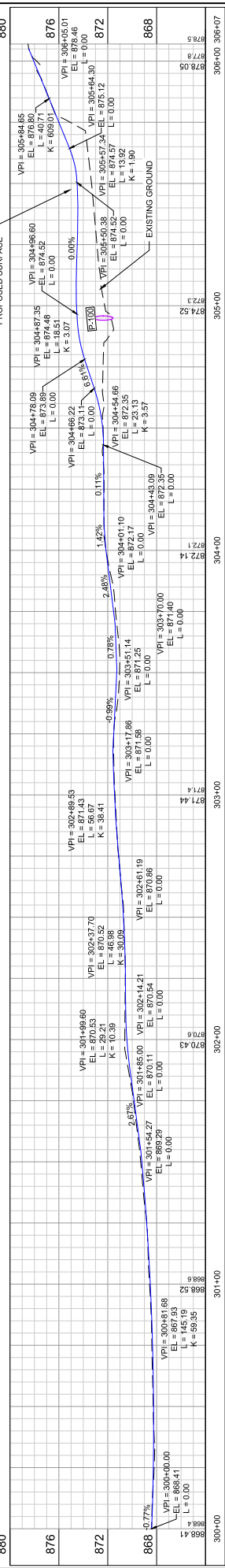
Alignment - Maintenance Path Camelot to University Profile





NOTE:
WETLAND AREAS OUTSIDE OF GRADING EXTENTS SHALL
BE FENCED OFF BY SILT FENCING AND NOT BE DISTURBED.
SEE SHEETS PP17 - PP20 FOR FENCING LOCATIONS

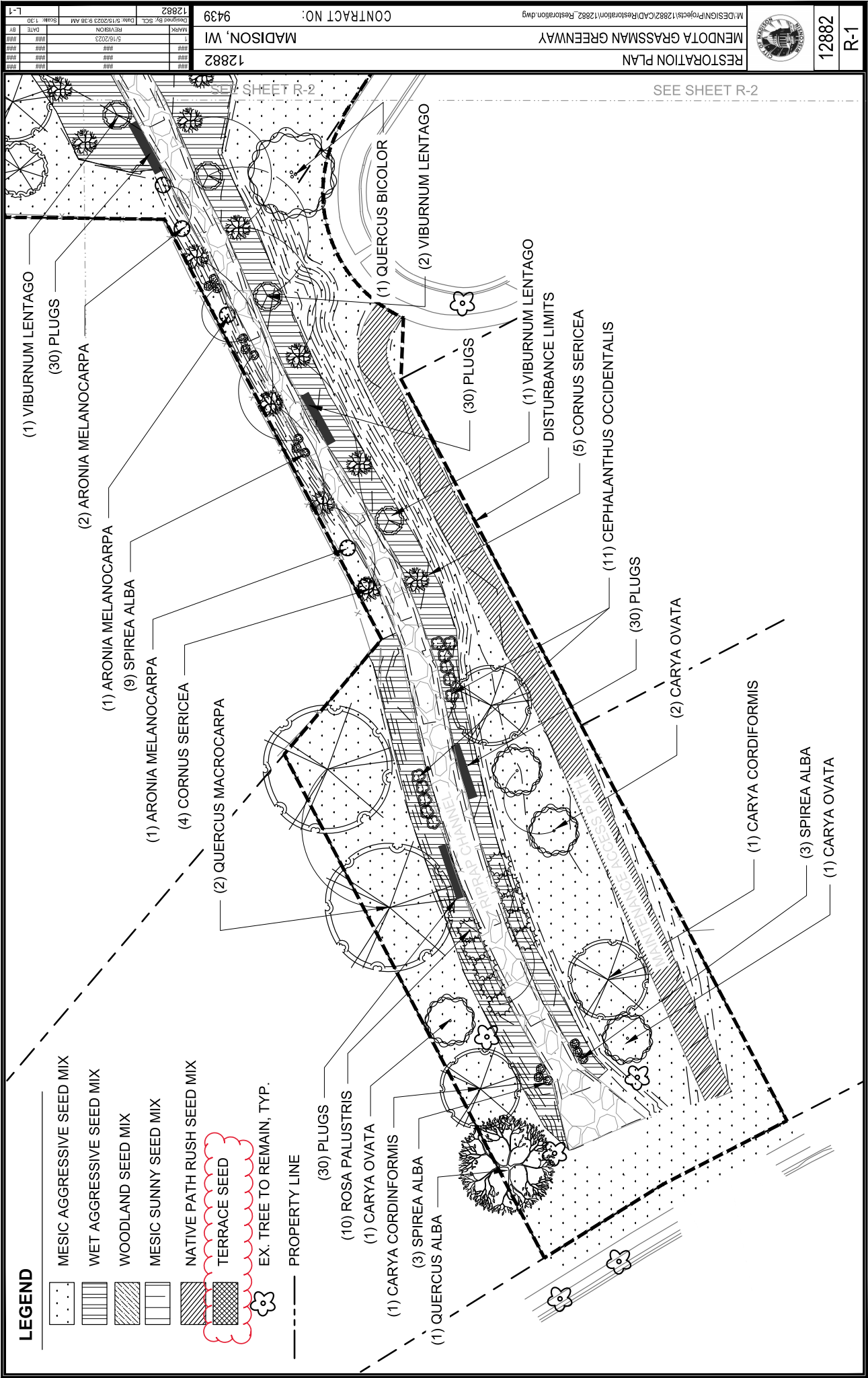
Alignment - Maintenance Path University to Julia Profile



PROJECT DATE: 2023	NO.	DATE	REVISION
DESIGNED BY: [Signature]	NO.	DATE	REVISION
CHECKED BY: [Signature]	NO.	DATE	REVISION
PROJECT NO.: 12862	PROJECT TITLE: PLAN & PROFILE - MAINTENANCE PATH UNIVERSITY AVE TO JULIA ST		
DATE: 11/20/23 1:05 PM, C:\0000700031\120480\Computer Documents\001121_246.pxl Maintenance Plan PP.dwg	<p>ENGINEERING ARCHITECTURE SURVEYING PLANNING ENVIRONMENTAL CONSULTING LANDSCAPE ARCHITECTURE (888) 842-7779 www.msa-inc.com</p>		
MENDOTA GRASSMAN GREENWAY IMPROVEMENTS		DANE COUNTY, WISCONSIN	

LEGEND

-  MESIC AGGRESSIVE SEED MIX
-  WET AGGRESSIVE SEED MIX
-  WOODLAND SEED MIX
-  MESIC SUNNY SEED MIX
-  NATIVE PATH RUSH SEED MIX
-  TERRACE SEED
-  EX. TREE TO REMAIN, TYP.
-  PROPERTY LINE



(1) VIBURNUM LENTAGO

(30) PLUGS

(2) ARONIA MELANOCARPA

(1) ARONIA MELANOCARPA

(9) SPIREA ALBA

(1) ARONIA MELANOCARPA

(4) CORNUS SERICEA

(2) QUERCUS MACROCARPA

(30) PLUGS

(10) ROSA PALUSTRIS

(1) CARYA OVATA

(1) CARYA CORDIFORMIS

(3) SPIREA ALBA

(1) QUERCUS ALBA

SEE SHEET R-2

(1) QUERCUS BICOLOR

(2) VIBURNUM LENTAGO

(30) PLUGS

(1) VIBURNUM LENTAGO

DISTURBANCE LIMITS

(5) CORNUS SERICEA

(11) CEPHALANTHUS OCCIDENTALIS

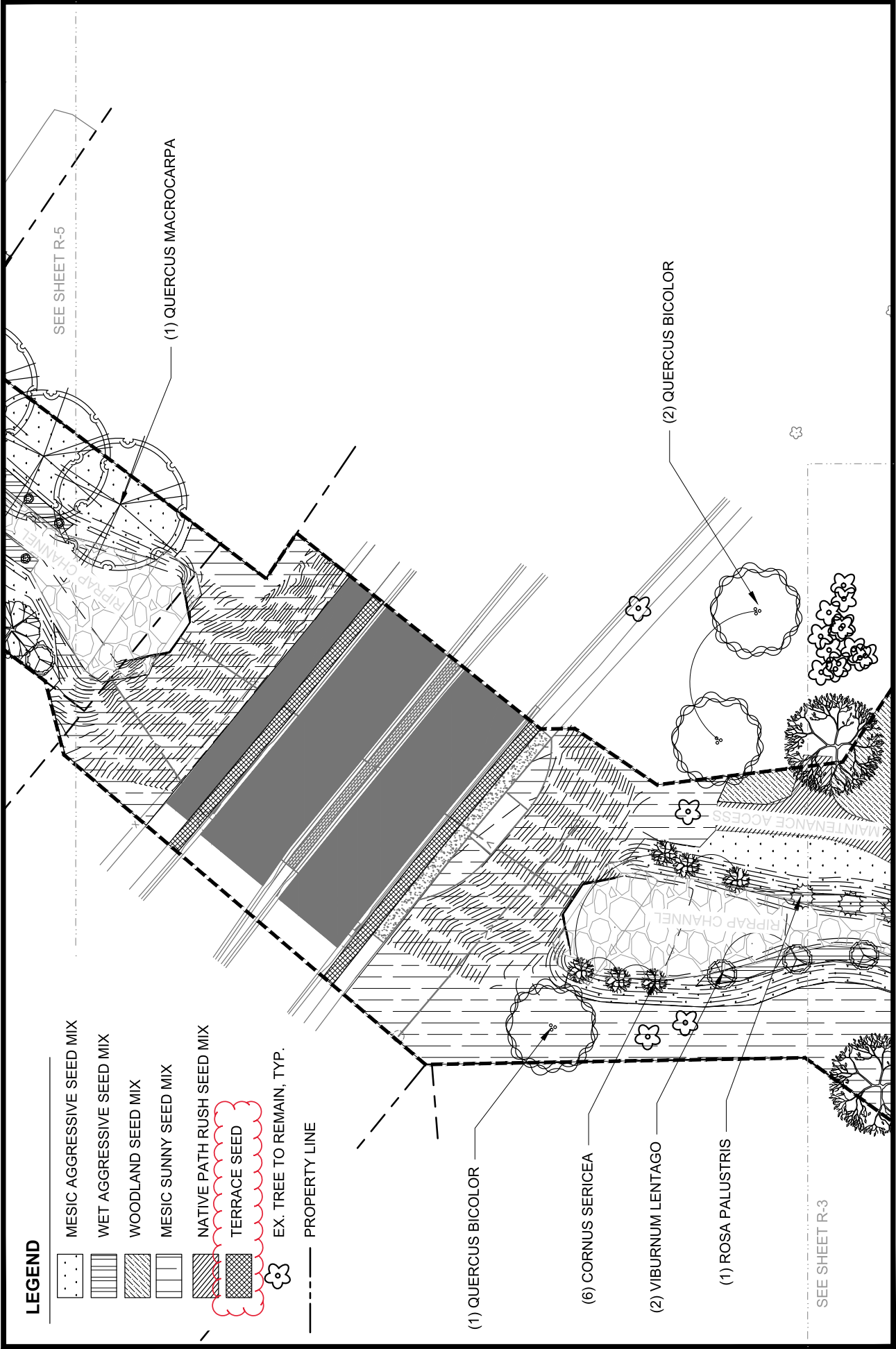
(30) PLUGS

(2) CARYA OVATA


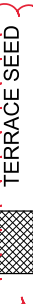


(1) CARYA CORDIFORMIS

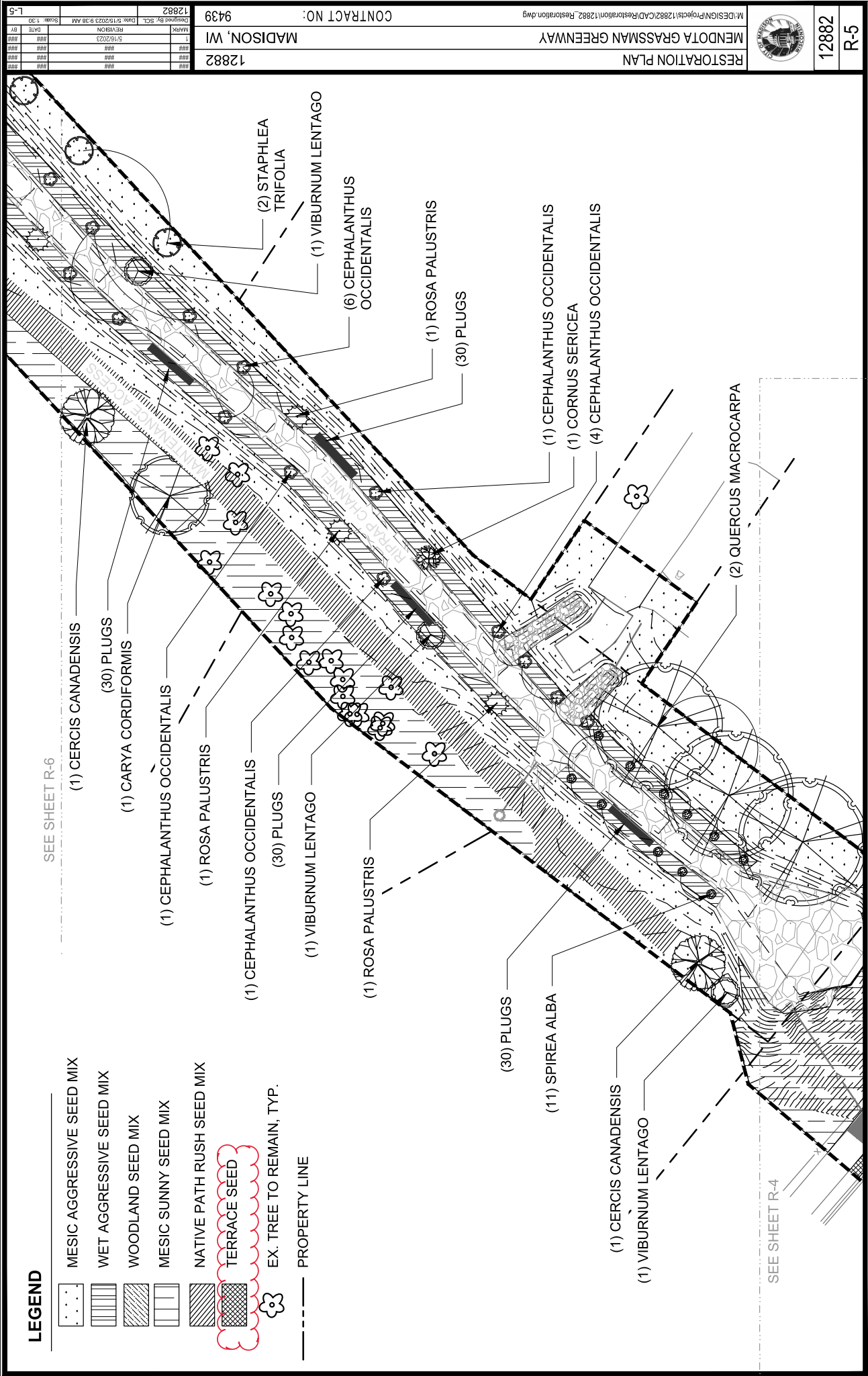
(3) SPIREA ALBA

(1) CARYA OVATA



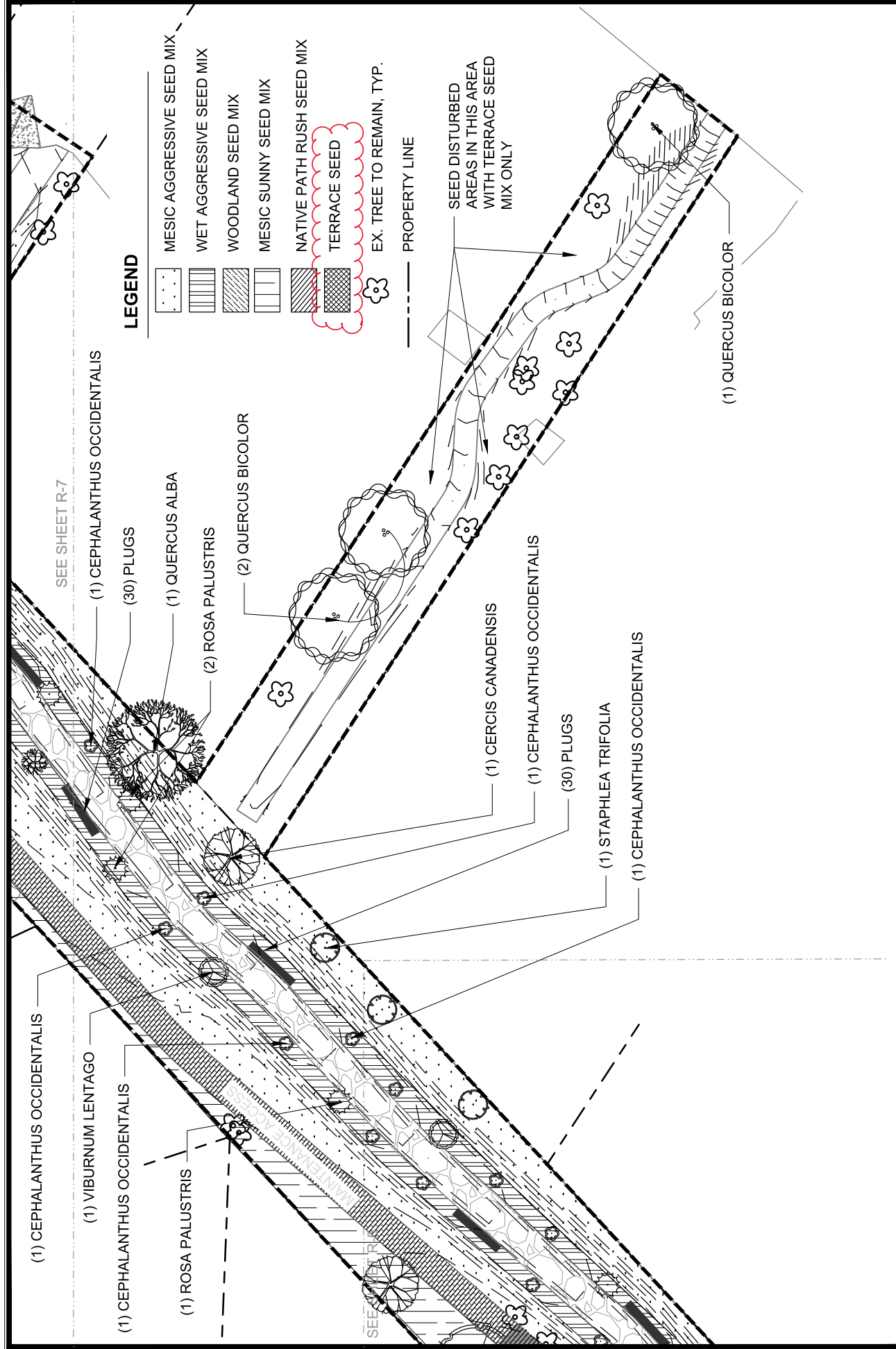
LEGEND

-  MESIC AGGRESSIVE SEED MIX
-  WET AGGRESSIVE SEED MIX
-  WOODLAND SEED MIX
-  MESIC SUNNY SEED MIX
-  NATIVE PATH RUSH SEED MIX
-  TERRACE SEED
-  EX. TREE TO REMAIN, TYP.
-  PROPERTY LINE



SEE SHEET R-6

SEE SHEET R-4



LEGEND

- MESIC AGGRESSIVE SEED MIX
- WET AGGRESSIVE SEED MIX
- WOODLAND SEED MIX
- MESIC SUNNY SEED MIX
- NATIVE PATH RUSH SEED MIX
- TERRACE SEED
- EX. TREE TO REMAIN, TYP.
- PROPERTY LINE

SEE SHEET R-7

(1) CEPHALANTHUS OCCIDENTALIS

(30) PLUGS

(1) QUERCUS ALBA

(2) ROSA PALUSTRIS

(2) QUERCUS BICOLOR

(1) CERCIS CANADENSIS

(1) CEPHALANTHUS OCCIDENTALIS

(30) PLUGS

(1) STAPHYLEA TRIFOLIA

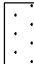


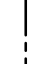
(1) CEPHALANTHUS OCCIDENTALIS

(1) QUERCUS BICOLOR

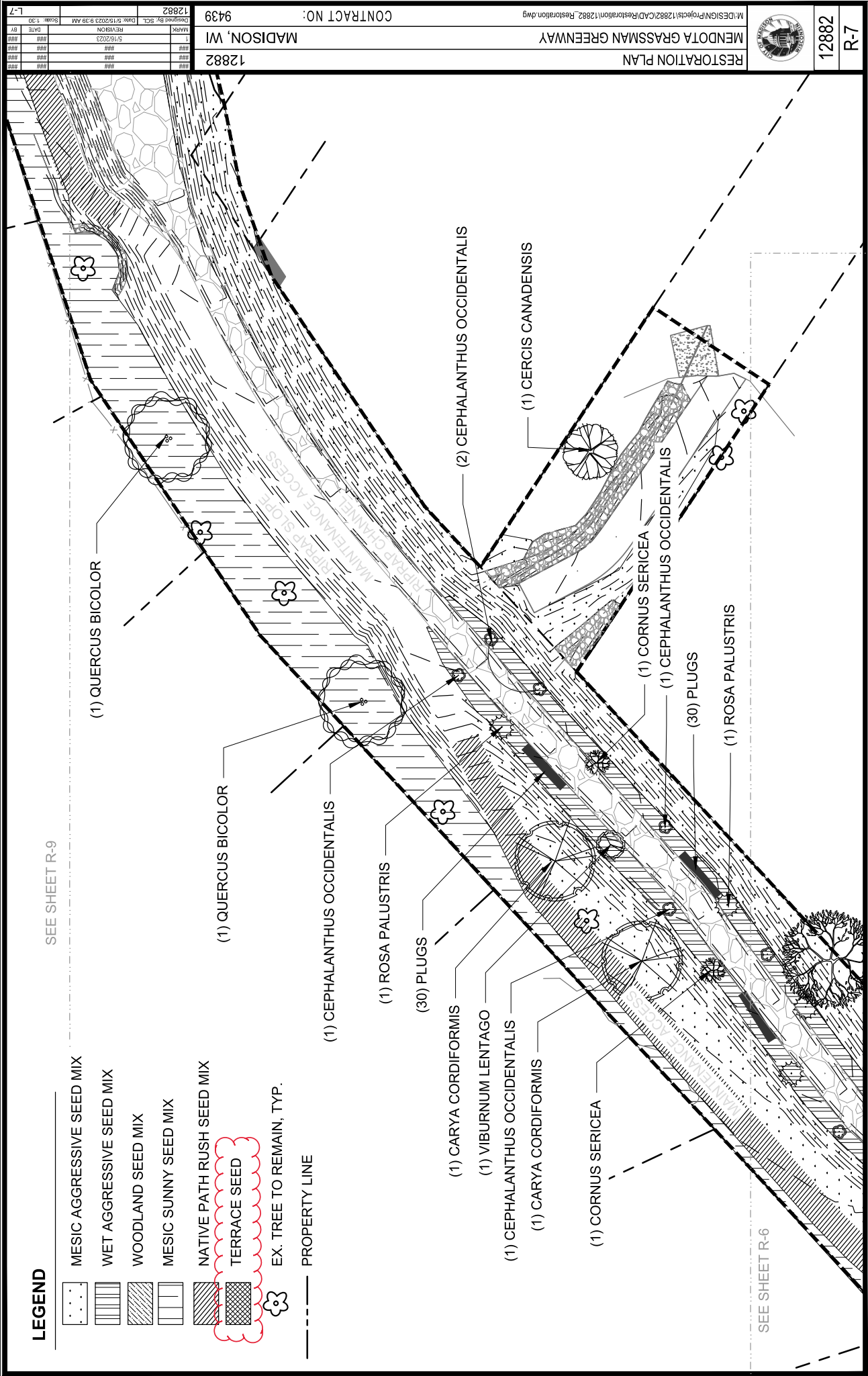
SEED DISTURBED AREAS IN THIS AREA WITH TERRACE SEED MIX ONLY

SEE SHEET R-7

LEGEND

-  MESIC AGGRESSIVE SEED MIX
-  WET AGGRESSIVE SEED MIX
-  WOODLAND SEED MIX
-  MESIC SUNNY SEED MIX
-  NATIVE PATH RUSH SEED MIX
-  TERRACE SEED
-  EX. TREE TO REMAIN, TYP.
-  PROPERTY LINE

SEE SHEET R-9



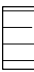





SEE SHEET R-6



12882
R-7

LEGEND

-  MESIC AGGRESSIVE SEED MIX
-  WET AGGRESSIVE SEED MIX
-  WOODLAND SEED MIX
-  MESIC SUNNY SEED MIX
-  NATIVE PATH RUSH SEED MIX
-  TERRACE SEED
-  EX. TREE TO REMAIN, TYP.
-  PROPERTY LINE

